



GFMG Series

GFMG-515 (2V515Ah)



GFMG VRLA are a large capacity high power battery that uses AGM technology. It has a wide & low structure design with low level of electrolyte stratification. GFMG has an excellent high current and high power discharge performance. It is suitable for floating and cyclic applications.

Benefits

- Long life according to EUROBAT Classification
- High discharge performance
- 99%+ gas recombination efficiency
- Maximum charge efficiency
- Low self-discharge rate
- Easy installation and handling

Applications

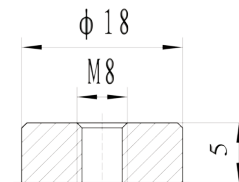
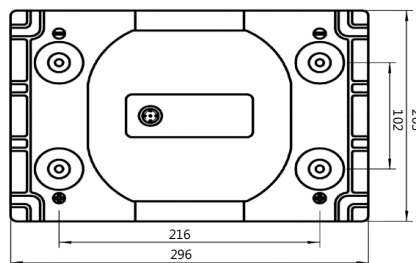
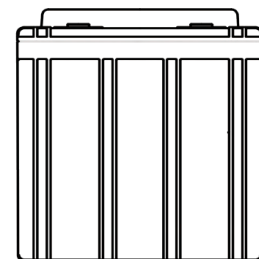
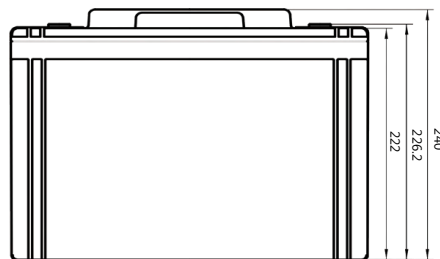
- Telecommunications
- Emergency power
- UPS units
- Electrical Power plants and substation
- Transportation

Standards

- IEC 60896-21/22
- BS 6290-4
- EUROBAT guide

Specifications

Drawing



GFM-30

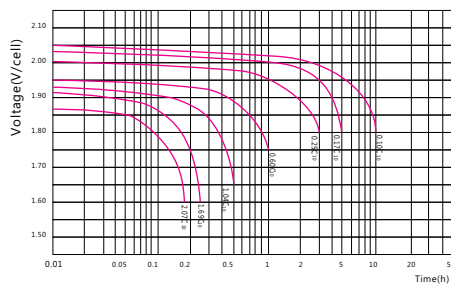
Battery Model	GFMG-515			
Design Life (years, 25°C)	12			
Capacity (Ah, 25°C)	10HR (51.5A, 1.80V)	5HR (91.2A, 1.80V)	3HR (136A, 1.80V)	1HR(309A, 1.75V)
	515	456	408	309
Dimensions (mm)	Length	Width	Height	Total Height
	296	203	222	240
Approx. Weight (kg)	34.7			
Reference Internal Resistance (mΩ)	0.38 (full charged @ 25°C)			
Maximum Discharge Current (A/5 Sec.)	2800			
Self-Discharge (25°C)	< 1% per month			
Charge Voltage (V/cell, 25°C)	Cycle use		Float use	
	2.35 (-3.5mV/°C/cell), max charge current: 77.25A		2.25 (-3.5mV/°C/cell)	
Short Circuit Current (A)	5400			

Discharge Data

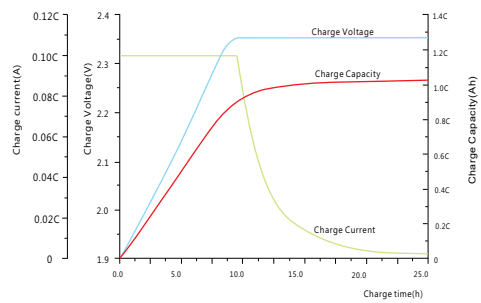
Constant Current Discharge Data (25°C, A)														
End Voltage (V/cell)	min							h						
	5	10	15	20	30	40	50	1	1.5	2	3	5	8	10
1.60	1406	1069	871	738	567	459	384	329	250	201	144	94.6	65.4	53.3
1.65	1278	979	805	688	535	437	368	323	244	198	142	93.5	64.8	52.9
1.67	1224	940	776	665	520	427	361	319	241	196	141	93.0	64.6	52.8
1.70	1167	899	745	641	504	416	353	313	238	194	140	92.5	64.2	52.4
1.75	1021	828	701	611	487	405	345	309	234	190	138	91.3	63.6	52.1
1.80	896	766	662	582	469	391	334	297	227	186	136	90.2	62.9	51.5

Constant Power Discharge Data (25°C, W/cell)														
End Voltage (V/cell)	min							h						
	5	10	15	20	30	40	50	1	1.5	2	3	5	8	10
1.60	2049	1734	1439	1254	955	774	661	578	446	365	263	175	126	103
1.65	1882	1574	1319	1156	887	729	628	558	429	352	256	172	124	101
1.67	1779	1519	1277	1125	855	710	611	551	423	348	254	171	124	100
1.70	1661	1442	1226	1081	828	691	594	542	418	343	251	170	123	99.8
1.75	1488	1334	1143	1005	776	649	568	516	406	334	246	166	121	98.5
1.80	1368	1224	1047	926	728	613	547	493	394	325	241	164	120	97

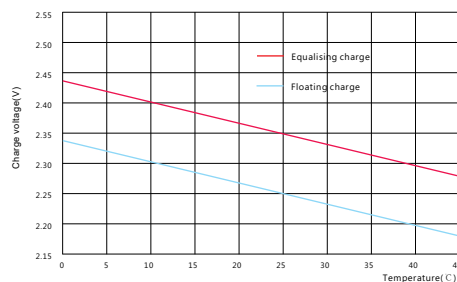
Performance Curve



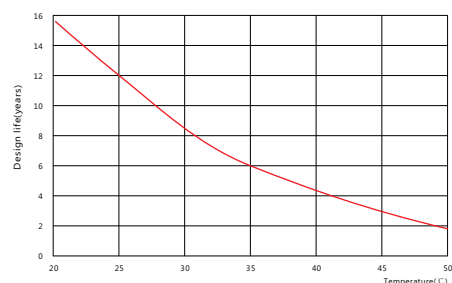
Discharge voltage vs. discharge time



Charge capacity vs. charge time



Charge capacity vs. temperature



Design life vs. temperature



Disclaimer: The manufacturer reserves the right to amend and/or vary the specifications and parameters of the product and apply updates accordingly at any time. It is the sole responsibility of the buyer and user of the product to ensure all applicable product specifications referred to are valid, applicable and up to date at all times. All product specifications are available upon written request to Alpha House Ltd. All batteries must be installed, used and maintained at all times in accordance with standard BS EN IEC 62485-2:2018, and specifically installed, used and maintained at all times in accordance with manufacturer's guidelines and product specification documentation. (All top terminal, front terminal and top vented batteries must be positioned horizontally, plumb and level at all times unless specified otherwise by the manufacturer. Further details are available upon written request to Alpha House Ltd.)